

120/120 Plus Digital Weight Indicator



Standard Features

120

- Large .8" (20.3 mm) Light Emitting Diode (LED) Display
- Configurable analog to digital measurement rate
- Power for four 350Ω load cells
- Primary/secondary units configuration: lb, kg, ounces, grams
- 5-button operation
- Two independent communication ports: (1) full duplex, (1) unidirectional or active 20 mA current loop
- Standardized EDP command sets
- Programmable ticket format up to two 180-character printout
- Full front-panel digital calibration and configuration
- Tilt stand
- Three-stage digital filtering
- Consecutive transaction numbering
- Time and date (volatile)

120 Plus

- Large .8" LCD display with back light
- Powered with rechargeable battery or wall adapter
- Power save feature for 700 hours of battery life
- Two setpoints with delay and timer selections
- Three digital inputs
- Ten stored tare values
- Display hold (based on 3 second average)
- Body mass index (BMI) function
- Time and date (volatile)

Approvals



Measurement
Canada
Approved



120 Plus - Approvals pending

Specifications

POWER:

Line voltages: 115 or 230 VAC
Frequency: 50 or 60 Hz
120 Plus Power consumption:
(estimated battery life)
60 hours with 1 x 350Ω
40 hours with 4 x 350Ω
Charge time 8 hours

EXCITATION VOLTAGE:

5 VDC,
4 x 350Ω or 8 x 700Ω load cells

ANALOG SIGNAL INPUT RANGE:

-0.6 mV/V - 3.0 mV/V

ANALOG SIGNAL SENSITIVITY:

0.3 μV/graduation minimum,
1.5 μV/grad recommended

RESOLUTION:

Internal resolution:
1 million internal graduations
Display resolution:
10,000 displayed graduations

MEASUREMENT RATE:

30, 15, 7, 3 per second
*30 per second

SYSTEM LINEARITY:

Within 0.01% of full scale

CIRCUIT PROTECTION:

RFI, EMI, ESD protected

SERIAL OUTPUT:

EDP port: Full duplex RS-232
Printer port:
Output-only RS-232 or active 20 mA
current loop
Both ports:
9600, 4800, 2400, 1200, 600, 300
bps; 7 or 8 data bits; even, odd or
no parity

UPDATE RATE:

15 times/seconds

DISPLAY:

0.8" (20 mm), 6-digit Super Red
Light Emitting Diode (LED) display,
7-segment, digits
*0.8" (20 mm) 6-digit LCD with
backlight
7-segment digits

STATUS ANNUNCIATORS:

Designators for: center of zero,
stand still, gross, net center of zero,
standstill, lb, kg, oz, g
*Battery, setpoint 1 & 2 BMI, HI-OK-
LO, Hold

KEYBOARD:

5-key flat membrane panel,
tactile feel
*zero, tare, present tare, hold, BMI,
units, numeric 0-9, clear, enter

OPERATING TEMPERATURE:

-10°C to 40°C/14°F to 104°F (legal)
-10°C to 50°C/14°F to 122°F
(industrial)

WEIGHT:

2.6 lb (1.2 kg)

RATING/MATERIAL:

Enclosure: heavy gauge ABS

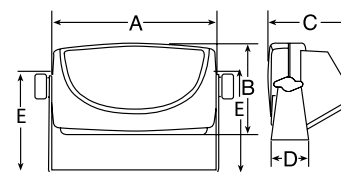
APPROVALS:

NTEP -6,000 Divisions,
Class III/IIIL, CC# 03-059;
Measurement Canada AM-5517,
Class III/IIILD at 6,000 Divisions;
OIML approved, TC 7072; T 5692
at 5,000 Divisions
CE marked

120 Plus - Approvals pending

WARRANTY:

One-year limited warranty



DIMENSIONS

A = 7.32" (1863 mm) C = 3.74" (95 mm)
B = 6.06" (154 mm) D = 1.65" (42 mm)
E = 4.76" (121 mm)

*Specifications apply to the 120

120/120 Plus

Indicators

PART #	DESCRIPTION	EST. SHIP WEIGHT	PRICE
120 with cord grip internal load cell connector			
92769	120, Desktop 115 VAC, cord grip for load cell connection [†]	3 lb	\$300.00
92772	120, Desktop 230 VAC, OIML/CE, cord grip for load cell connection ^{††}	3 lb	300.00
Primary Component Parts for 120			
78609	Board assembly for use with external LC connector		235.00
96293	Board assembly for use with internal LC connector		235.00
78610	Overlay membrane switch		47.00
78611	Power supply, 115 VAC		21.00
78612	Power supply, 230 VAC (2-pin Europe)		36.00
120 Plus			
103632	120, Desktop 115 VAC/230 VAC [†] with rechargeable battery	3 lb	\$450.00
Primary Component Parts for 120 Plus			
103634	CPU/Display board assembly		335.00
103635	Overlay membrane switch		47.00
103636	Power supply, 115 VAC/230 VAC		21.00
103637	Rechargeable Battery		50.00
Options/Accessories			
83835	Load cell connector with 2-meter length pigtail		25.00
93205	Load cell connector with 6 meter length pigtail		45.00
82505	6-pin socket external load cell connector		10.50
77925	Revolution [®] III Scale Software*		35.00
103507	External load cell plug replaces cord grip		20.00
76699	Additional operating manual		25.00

* Revolution III can be downloaded for FREE at www.ricelake.com
 External load cell plug replaces cord grip



^{††} CEE 7/7 plug



[†] NEMA 5-15 plug